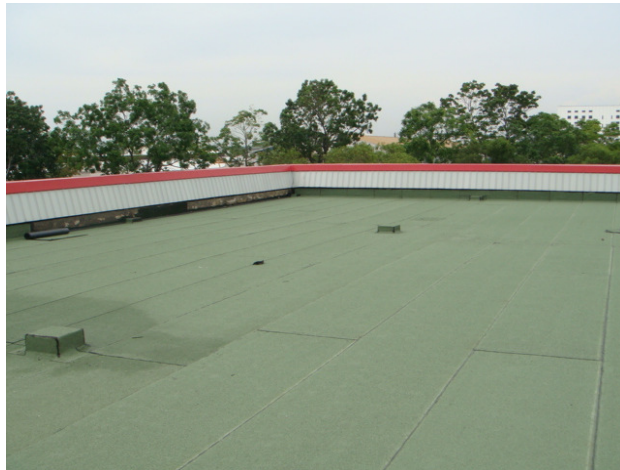


▶ Description



TamSeal Bitu-Primer is based on bitumen modified rubber and resins to produce a specifically formulated primer for bitumen waterproofing membranes.

▶ Key Benefits

- Cost effective
- Brush, roller or spray application.
- Excellent adhesion to concrete, timber, steel block or brick work.

▶ Typical Applications

Adhering self adhesive or torch on bitumen / rubber membranes such as TamSeal 1500, TamSeal 3000C and TamSeal 4000E.

▶ Technical Data

| TamSeal Bitu-Primer                    |                      |
|--|----------------------|
| Flash Point                            | 32°C Minimum         |
| Relative Density @15°C                 | 0.89 to 0.91         |
| Drying Time                            | Approx. 2 to 4 hours |
| Solvent Content<br>(depending on type) | Approx. 40% to 49%   |

|                                       |  |
|---------------------------------------|--|
| Suggested Covering Capacity per Litre | Mild Steel: 10 - 16m <sup>2</sup>          |
|                                       | Concrete: 5 - 8m <sup>2</sup>              |
|                                       | Lightweight Screed:<br>2 - 4m <sup>2</sup> |

All technical data stated herein is based on tests carried out under laboratory conditions.

▶ Application Guidelines

**Surface Preparation**

- Surfaces must be dry and clean, free from dust, dirt, grease, moss, lichen or any other foreign matter.

**Installation**

- TamSeal Bitu-Primer can be brush applied or spray applied to damp (not wet) or dry surfaces. Ensure that only an even thin coating is applied and fully penetrated substrate. Prime twice if substrate is porous. Stir emulsion well before use. Allow for the solvent to evaporate before application of other materials.

▶ Packaging

TamSeal Bitu-Primer is supplied in 18 litres per pail.

▶ Storage

TamSeal Bitu-Primer should be stored at room temperature (min 10°C and max 38°C), kept dry and out of direct sunlight. If these conditions are maintained and the product packaging is unopened, then a shelf life of 1 year can be expected.

▶ Health & Safety

TamSeal Bitu-Primer should only be used as directed. We always recommend that the Health & Safety data sheet is carefully read prior to application of the material. Our recommendations for protective equipment should be strictly adhered to for your personal protection. The Health & Safety data sheet is available upon request from your local TAM International representative.

# TamSeal Bitu-Primer

Membrane Primer



---

[www.taminternational.com](http://www.taminternational.com)

TAM Australia

+61 8 8340 4166

TAM Hong Kong

+852 2690 3723

TAM India

+91 92 7222 5905

TAM Indonesia

+62 21 7801414

TAM Singapore

+65 6296 0364

TAM Taiwan

+886 49 2263 066

TAM UK

+44 2476 253098